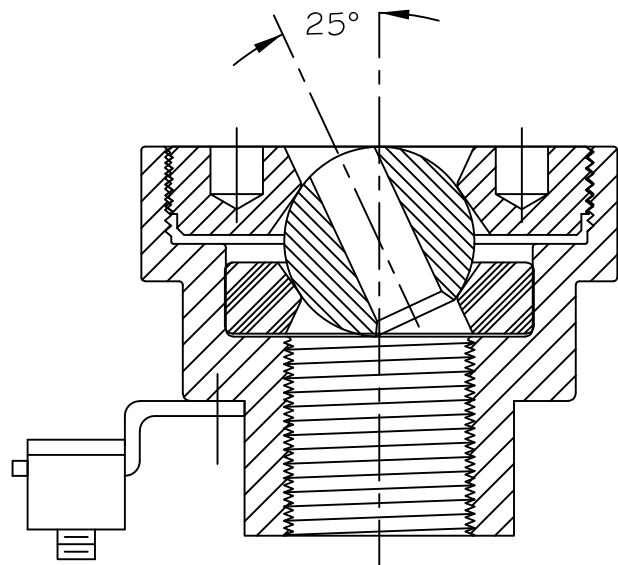
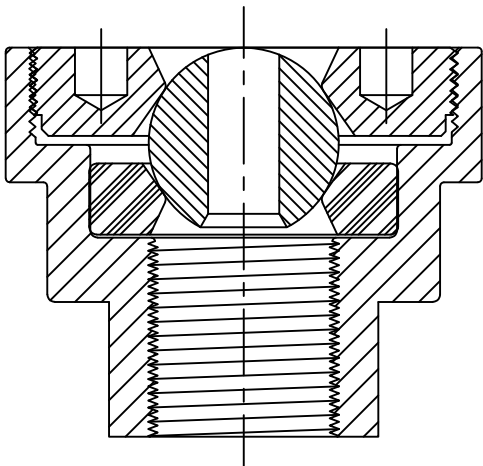
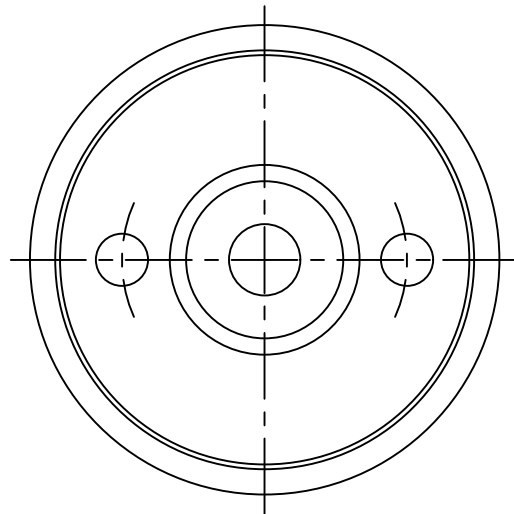


2 WRENCH HOLES
7mm Dia. X 6.35mm Deep
42mm Dia. BC

63.5mm Dia.
2 1/2"

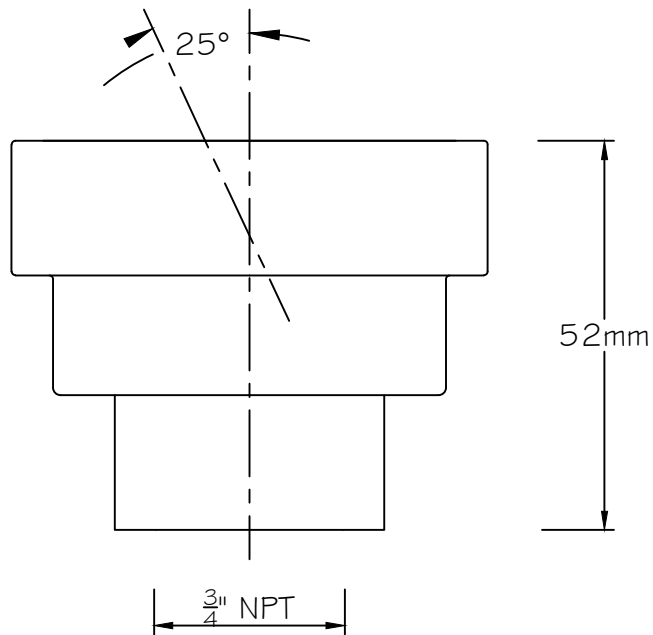
9.53mm ID
3/8"

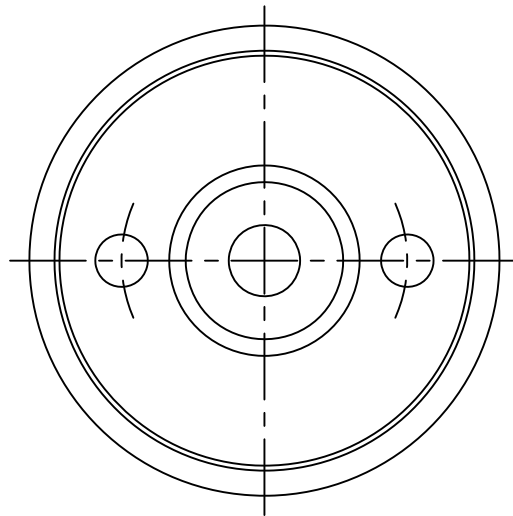




63.5mm Dia.
2 1/2"

9.53mm ID
3/8"

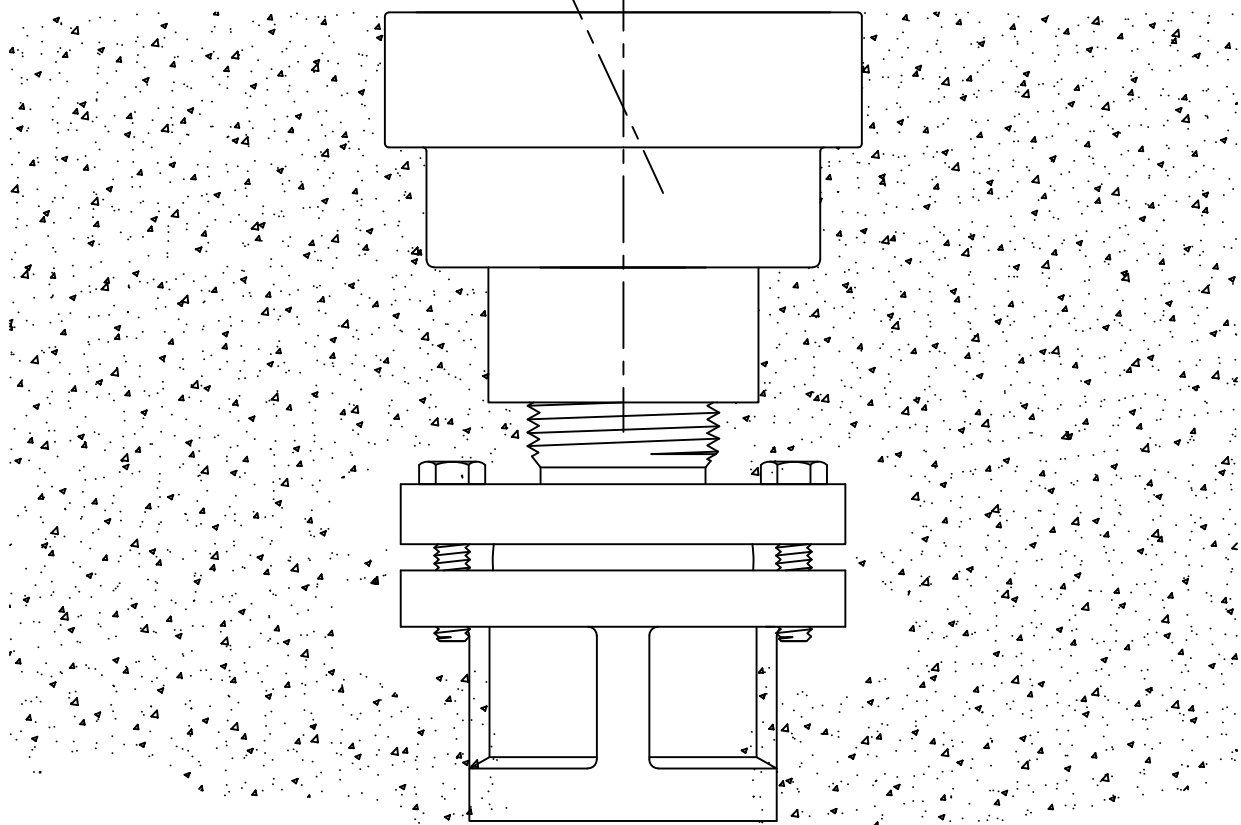




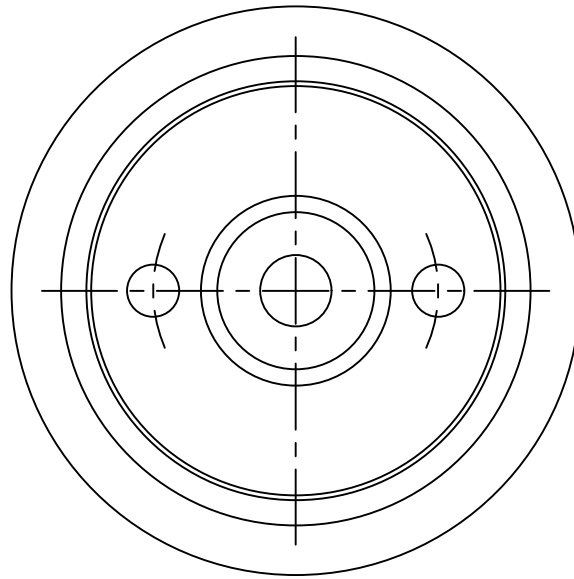
63.5mm Dia.
2 1/2"

9.53mm ID
3/8"

25°



3/4"
NPS/BSP



63.5mm Dia.
2 1/2"

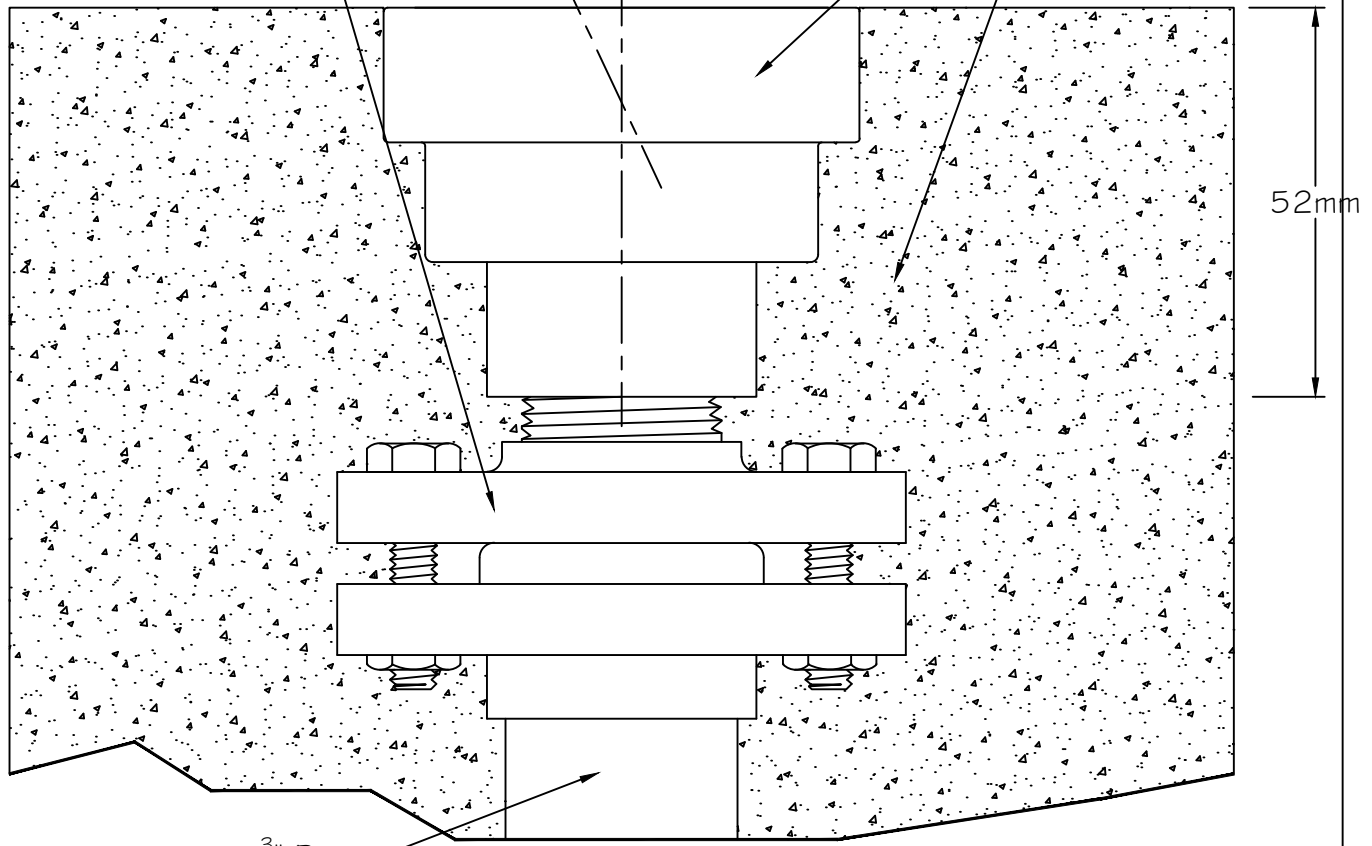
9.53mm ID
3/8"

b-2 Directional adjustment
flange

25°

32 cz

Concrete



3/4" Pipe

3/4" NPT

52mm

32CZ performance — 3/4" inlet, 3/8" orifice

Jet height	Required pressure at nozzle (ft of water)	Flow (GPM)
4 ft	4 ft	3.4 GPM
5 ft	5 ft	3.8 GPM
6 ft	6 ft	4.2 GPM
8 ft	8 ft	4.8 GPM
10 ft	10 ft	5.4 GPM