

BASE, CLAMP & OPTION TO BE ORDERED TOGETHER AS REQUIRED BUT ACCOUNTED FOR SEPARATELY. The drawings on this page show a base, which is not included in fitting option.

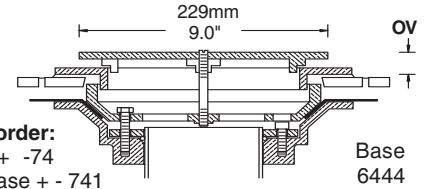
PEM 6444-74 SUCTION or DISCHARGE FITTING is designed for mosaic tiled shallow pools that have a subsurface membrane waterproofing protection. Also to move a maximum flow of water at minimum of turbulence through a floor hugging fitting. The mortar and tile setting height may vary between 20mm/0.75" & 50mm/2.0" should be specified as the hold down rod of the cover is for the given maximum height. This fitting can also be supplied with an additional mosaic tile pan of 300 x 300x10mm (12" x 12" x 0.375") square dimensions. This to hide the fitting completely. Specify **6444-741** Dimension 'OV' increases to 30mm (1.190") Chrome plating of the visible parts is suggested at slight extra cost if light colored tiling is used in the pool, for dark tiles do not chrome plate.

PEM	T	OD	OV	FL**
6444-74	4"	267mm / 10.500"	19mm / 0.750"	235 L/min 60 GPM

**Suggested maximum suction flow with 150mm/6.000" water depth over fitting

PEM 6440- 74

SERIES FLOOR SUCTION or DISCHARGE FITTING



To specify & order:

Fitting: Base + -74

With tile pan: Base + - 741

Base
6444

PEM 6440-75 HEAVY DUTY ANTI VORTEX SUCTION or DISCHARGE FITTING is designed for larger volume flows with minimum friction loss and flow interference. The optional built in valve can be adjusted from above the fitting to suit flow requirements and/or to balance multiple fitting installation. The fitting has cast bronze base with

Anti Vortex Covers in cast Bronze - 1 , in formed plastic - 2

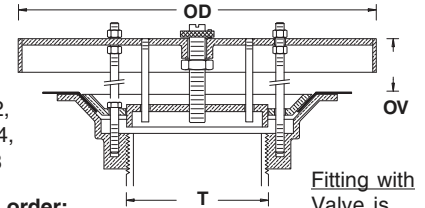
PEM 6444-751 (with valve) is available, optional and extra with -1 cover only!

*Standard Dimensions. Add appr. 25mm/1.0" for overall height (OV) for Valve

**Suggested maximum discharge flow at appr. 300mm/12.0" water over fitting. For Suction Flow rate 10% for every 150mm/6.0" under 1000mm/39.4" waterdepth over fitting.

PEM 6440- 75

SERIES ANTI VORTEX SUCTION or DISCHARGE FITTING



Base, 6442,
6443, 6444,
6446, 6448

To specify & order:

Fitting

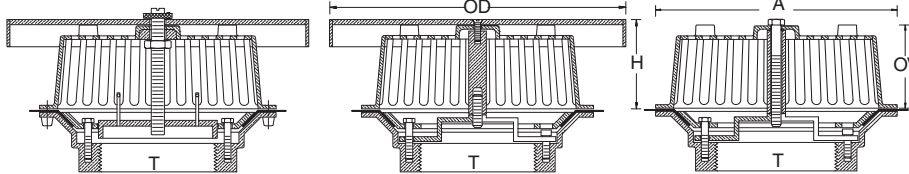
Fitting with Valve

Without waterproofing membrane, leave out Clamp(-05)

Base + 05 + -75 -1 or -2
Base + 05 + -751 - 1 only

Fitting with
Valve is
shown

PEM 6440-84 HEAVY DUTY BASKET DRAIN AND ANTI VORTEX SUCTION FITTINGS WITH CAST BRONZE STRAINER BASKET are designed for larger volume flows with minimum friction loss and flow interference. The fittings without Anti Vortex Cover are for use as strained drains especially useful in terminating balancing pipe systems.



PEM 6440-843-1, Bronze
PEM 6440-843-2, Plastic

PEM 6440-842-1, Bronze
PEM 6440-842-2, Plastic

PEM 6440-841-1

Base, 6442, 6443
6444, 6446, 6448

PEM 6440- 841

SERIES DRAIN FITTING



PEM 6443-841

Anti Vortex Covers in cast Bronze - 1 , in formed plastic - 2

With Anti Vortex Cover the suction fittings become efficient for shallow pools. With optional built in valve the flow can be adjusted from above the fitting to suit requirements and/or to balance a multiple suction fitting installation such as in narrow and long pools. The fitting is made of heavy cast bronze, brass and stainless steel fitted.

PEM 6440- 842

SERIES ANTI VORTEX SUCTION STRAINER



PEM 6443-842

PEM Base	T	A	OD	OV	H	W	Free Area	Max. Flow (1)	Max. Flow (2)
6442	2"	216mm	203mm	88mm	92mm	102mm	145cm ²	310 L/min	95 L/min
		8.50"	8.0"	3.47"	3.75"	4.0"	23 sq."	80 GPM	25 GPM
6443	3"	267mm	330mm	92mm	98mm	102mm	275cm ²	680 L/min	227 L/min
		10.51"	13.0"	3.625"	3.86"	4.0"	42 sq."	180 GPM	60 GPM
6444	4"	267mm	330mm	92mm	98mm	102mm	275cm ²	680 L/min	227 L/min
		10.51"	13.0"	3.625"	3.860"	4.0"	42 sq."	180 GPM	60 GPM
6446	6"	318mm	406mm	117mm	123mm	254mm	600cm ²	1290 L/min	380 L/min
		12.52"	16.00"	4.61"	4.840"	10.0"	92 sq."	340 GPM	100 GPM
6448	8"	318mm	610mm	117mm	123mm	254mm	600cm ²	2650 L/min	380 L/min
		12.52"	24.0"	4.61"	4.84"	10.0"	92 sq."	700 GPM	100 GPM

Max Flow (1) = Suction Fitting with Anti-Vortex Cover. Maximum Suction Flow with minimum water depth (W) over cover.

Max. Flow (2) = Drain Fitting without Anti-Vortex Cover. Maximum suggested absorption flow rate with minimum water depth (W) over strainer basket.

T = Pipe Size
A = Diameter of fitting.
OD = Diameter of cover
OV = Height of cover
H = Height of fitting w. cover
W = Minimum water over fitting, cover or basket

CUSTOM MADE SQUARE TILE PAN COVER for mosaic tiled pools. Please enquire, stating required frame size and depth to suit tiles. Not available in formed plastic.

To specify & order:

A. Fitting w/ Strainer: Base + 05 + - 841

B. Fitting w/ Strainer & Anti Vortex Cover: Base + 05 + - 842 - 1 or - 2

C. Fitting w/ Strainer, Anti Vortex Cover & Valve: Base + 05 + - 843 - 1 or - 2

For application without water proofing membrane, leave out the Clamp(-05)

PEM 6440- 843

SERIES VALVED ANTI-VORTEX SUCTION STRAINER



PEM 6446-843