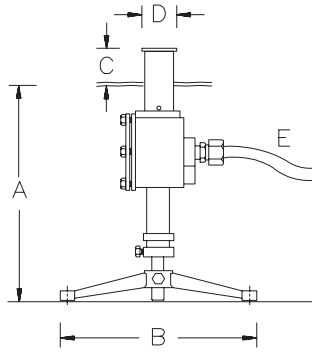


PEM L101-16

WATER MAKE UP & LOW LEVEL SAFETY SHUT OFF CONTROLS FREE STANDING SINGLE SENSOR

#444-4010



- DIMENSIONS :**
A 305/406mm-12"/16"
 Height Adjustable
 Stand
B 250mm - 10.000"
C 51mm - 2.000"
D 45mm - 1.750"
E Electrical Cable
 16/3 STW or SOW

Standard Length: 2.7m/9ft.
 Other lengths optional
 and extra

- ELECTRICAL RATINGS:**
 12 Vac., 20 VA,
 Non Inductive Float switch
 is either N.C. or N.O. by
 up-ending its Switch floats.

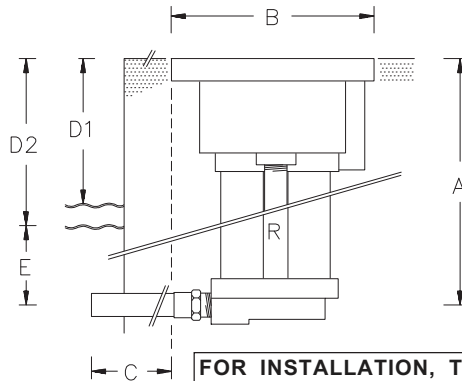
PEM L101-16 is made of cast bronze, brass and copper and is stainless steel fitted. **PEM L101 - 16** single float switch sensor (when used by itself), operates on a 6.35mm/ 0.250" waterlevel differential. This sensor, when connected to a **PEM L101 - 51** control panel, will operate a solenoid fill valve for water make up or when installed at a lower level can be used as safety shut off for electrical equipment in a fountain pond. When two sensors are used, they are connected to a PEM L101-71 Control Panel, allowing for unlimited water make up or water make up & safety shut-off. Final waterlevel adjustment in a pool can be achieved when pond is filled by extending or contracting the sensor stand. In North America, the sensor must be fed through a separate conduit. Elsewhere, depending on codes, the sensor can be attached to a junction box, feeding underwater lights, or be supplied with long cable for outside of pool connection. For U.L. listed water level controls, see PEM L104 Series. For greater depths the sensor: **PEM L101-17 (#444-4110)** is custom made to given specifications. This sensor has a heavy duty, 300mm/ 12.0" tripod stand.

PEM L101-29

TOP ACCESS WALL MOUNTED DUAL SENSOR

#444-5020

* Can be customized at extra costs to given dimension specifications.



- ELECTRICAL RATINGS :**
 12 Vac., 20 VA, Non Inductive Float switches are either N.C. or N.O. by up-ending the switch floats.

DIMENSIONS :

- A** Standard * 343mm/13.5"
 Minimum 150mm/6.0"
 Maximum None
B Square Top 156mm/6.125"
C Standard * 150mm/6.0"
D1 Water Make Up
 Level Differential 6.35mm/0.250"
 Standard * 230mm/9.0"
 Minimum 140mm/5.5"
 No Maximum, specify

- D2 Safety Shut Off**
 Level Differential = 'D1'
 Standard * 264mm/10.5"
 Minimum 178mm/7.0"
 No Maximum, specify
E Minimum 77mm/3.0"
R 1/2" NPT / BSP

FOR INSTALLATION, THE VENT HOLES IN COVER MUST BE TAPED OVER!

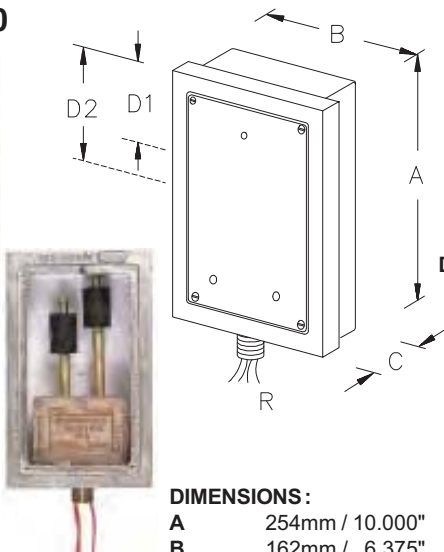
This sensor can also be supplied at no additional costs with a vent tube into the free board of pool to same length as 'C'. Specify: ..WITH VENT TUBE.

PEM L101-29 is made of cast bronze, brass and copper and is stainless steel fitted. **PEM L101- 29** dual float switch sensor operates on a 6.35mm/0.250" waterlevel differential for water make up and on a 38mm / 1.500" differential (or as adjusted) for the low level safety shut off. This sensor when connected to a PEM L101 - 71 control panel will operate a solenoid fill valve for water make up and as safety shut off for electrical equipment in a fountain pond. The safety shut off circuit can also be used for pump up / pump down control or for a greater than 6mm / 0.250" level differential. The sensor assembly is cast into concrete or placed anywhere near the pool (into a flowerbed) with proper elevation, connected to the pool by a fill tube. Incorporated into the assembly housing is a vent to prevent air lock in the sensor housings. The sensor float switches are suspended by brass tubes, allowing sensor adjustments of appr. 38mm - 1.5", however the brass tubes can be shortened or replaced by longer ones to achieve the desired waterlevel adjustment. PEM L101 - 29 Sensor assembly is extremely vandal resistant. For fill tube waterproofing use PEM 6390 flange or membrane clamp. For U.L. listed level controls, see PEM L104 Series.

PEM L101-32

FRONT ACCESS WALL MOUNTED DUAL SENSOR

#444-6020



- ELECTRICAL RATINGS :**
 12 Vac., 20 VA, Non Inductive Float switches are either N.C. or N.O. by up-ending the .35.35 Switch Floats.
 For U.L. listed level controls see: PEM L104 Series.

- D1 Water Make Up**
 6.35mm/0.250" Differential
 Appr.(40-50mm/1.5"/2.0"
 Adjustment Range after installation)
D2 Safety Shut Off
 Differential to D1
 Appr.(50-76mm/2.0"-3.0"
 Adjustment Range after installation)
R 1" NPS / BSP

DIMENSIONS :

- A** 254mm / 10.000"
B 162mm / 6.375"
C 95.25mm / 3.75"

PEM L101 - 32 is made of cast bronze, brass and copper, stainless steel fitted with a Kydex or ABS forming niche. **PEM L101-32** dual float switch sensor operates on a 6mm / 0.250" waterlevel differential for water make up and on a 38mm/1.500" differential (or as adjusted) for the low level safety shut off. This sensor when connected to a **PEM L101 - 71 Control Panel** will operate a solenoid fill valve for water make up and as safety shut off for electrical equipment in a fountain pond. The safety shut-off circuit can also be used for pump up / pump down control or for a greater than 6.35mm / 0.250" level differential. The sensor assembly is cast into the face of concrete walls, showing only the face of the bronze frame and the stainless steel cover plate. The sensor float switches are mounted upon brass tubes, allowing sensor adjustments of approx. 254mm - 1.000" after pool is filled. This sensor assembly is also available with a single float switch as **PEM L101 - 31 (# 444-6010)**

OPTIONAL & EXTRA

- Tilemask Add /-58
WATERPROOFING OPTIONS
 Surface Puddle Flange Add /-60
 Surface Waterproofing Membrane Clamp Add /-62