

#	PEM	DESCRIPTION
611-2200	6345	Standard Fitting
611-2210	6345-61	w. Surface Flange
611-2220	6345-62	w. Surface Clamp
611-2240	6345-65	w. Subsurface Flange
611-2250	6345-66	w. Subsurface Clamp
611-2203	6345-TM	Tile Mask
611-2300	6345A	Standard Fitting
611-2310	6345A-61	w. Surface Flange
611-2320	6345A-62	w. Surface Clamp
611-2340	6345A-65	w. Subsurface Flange
611-2350	6345A-66	w. Subsurface Clamp
611-2303	6345A-TM	Tile Mask

**ALL CAST BRONZE
1 1/2" NPT / BSP**

**PEM 6345
SERIES**

PEM 6345 is made of cast bronze, brass and stainless steel fitted. Custom bored orifice to maximum orifice size: 25mm\1.0"

Output angle is adjustable to 40° included angle.

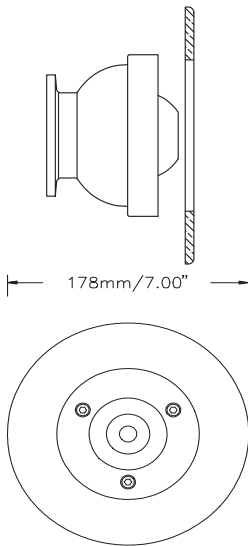
For flow rates consult PEM 800 series clearstream jets.

**EYE - BALL RETURN
FITTING**



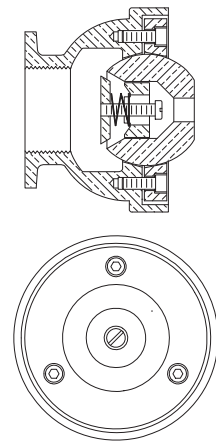
PEM 6345

**PEM 6345 - TM
TILEMASK**
To be Epoxy fitted



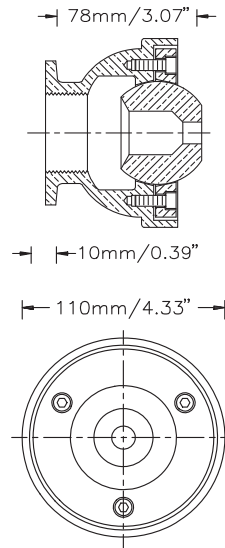
**PEM 6345A
VALVE EYEBALL
RETURN FITTING**

Custom bored orifice to max. orifice size : 16mm-0.625"



Valve is accessible for adjustment through orifice.

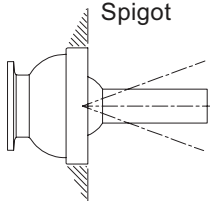
PEM 6345



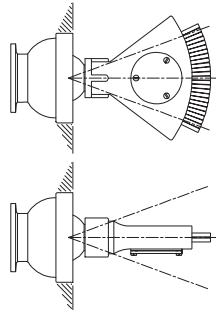
PEM 6345 - 62
WITH BRONZE
SURFACE
MEMBRANE
CLAMP

PEM 6345 - 66
WITH BRONZE
SUB-SURFACE
MEMBRANE
CLAMP

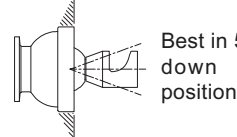
PEM 6350-847B
611-1287
Clear Stream
Spigot



PEM 6350-31-25
611-1281
Finger Jet fan spray
Best at 45° diagonal tilt
to max. 1.5m\5'



PEM 6350-83
611-1282
Fall over forward solid wide
fan 30-50cm\12-20"
(GARGOYLE SPRAY)

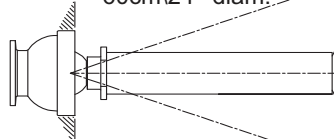


Best in 5°
down
position

SWIVEL BASE
AS SHOWN
ABOVE

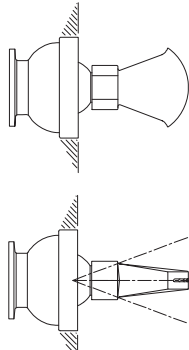
PEM 6350-18-3A
611-1288

Umbrella type solid spray to
60cm\24" diam.

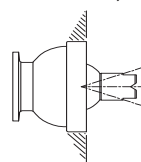


Best in 5°
up
position

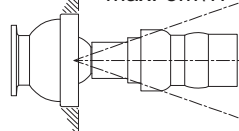
PEM 6350-02-2
611-1286
Solid fan spray to
max. 30-50cm\12-20"



PEM 6350-94
611-1284
Narrow Fan 50cm\20"
(GARGOYLE) SPRAY



PEM 6350-14-3
611-1283
Wall mounted
50mm\2" white water jets
max. 5m\17'



**PEM 6350
SERIES
WALL MOUNTED
JETS & NOZZLES**



PEM 6350-02-2
Front and Side
View



PEM 6350-31-25
Front and Side
View

